

# Entry Level IP Cameras

(Models: XIP3000, XIP3001 & XIP3101)



The XIP3000, XIP3001 & XIP3101 are designed for low risk applications and represent excellent value for money, making IP surveillance affordable even for those on the smallest of budgets. They are equipped with a high quality CMOS image sensor which provides good picture quality in good lighting and is perfect for applications where observation and not identification is required. The cameras feature a 10/100MB network socket for quick and easy connection to a local or wide area network (internet), in addition to this the wireless versions, models XIP3001 & XIP3101, feature plug & play installation for wireless networks and wireless routers and a 10/100MB network socket for extra security or situations where the camera is being used outside the normal transmission range of a wireless network. All units feature a built in web server which allows them to be accessed quickly and easily from Internet Explorer from any other PC on the same network or across the internet. In addition to the web server access the cameras are also supplied with 16 Camera DVR software which allows viewing, configuring and recording of up to 16 IP Cameras.

- ✘ Quick and simple setup
- ✘ High quality video images
- ✘ Integrated IR LEDs for Nightvision, even in complete darkness (XIP3101)
- ✘ Compatible with 3G mobile phones & PDAs (XIP3101)
- ✘ Motion detection alerts via email
- ✘ USB Memory Stick compatible for recording locally at the camera
- ✘ Monitor and record live video
- ✘ Record up to 16 cameras on any compatible Windows PC
- ✘ View using Internet Explorer, Apple Safari or Mozilla Firefox
- ✘ MJPEG (XIP3000/3001) & MPEG4, MJPEG & RTSP (XIP3101) compression for reduced bandwidth and storage
- ✘ Multi client access and password protection
- ✘ Use indoors or outdoors using the optional housing (model XIP3000H)
- ✘ Compact Design

## Feature Highlights

### **✘ For demanding security installations**

XIP3000, XIP3001 and XIP3101 are entry level IP cameras for demanding security installations. Their wide range of features including their ability to operate in low light conditions and high resolution ensure good performance and superior image quality. These types of cameras are ideal for applications where observation and not identification is required, such as baby monitoring, building security, watching property or vehicles.

---

### **✘ Night Shot Mode**

These camera support "night shot mode", which delivers clear images in near dark or poorly illuminated environments.

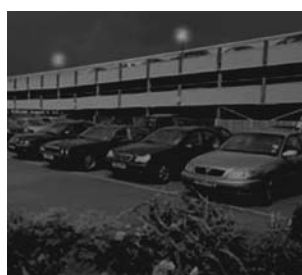
---

### **✘ Exceptional Day/Night Performance**

XIP3101 features Xvision's unique Nightvision feature. It's Integrated Long Life Infra Red LEDs turn on automatically when the light falls below a certain level and the camera switches to B/W mode, providing images in the dark up to 5 metres.



Daylight mode- Colour



Nightvision mode- Black & White

### **✘ Multiple Protocols/OS Platforms**

The cameras support multiple network protocols, including TCP/IP, SMTP e-mail, HTTP, and other Internet related protocols. Therefore, you can use the cameras in a mixed operating system environment, such as Windows .

---

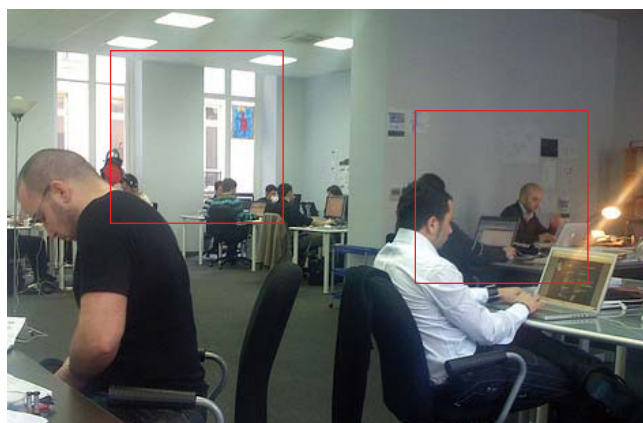
### **✘ Easy Configuration**

By using a standard Web browser or the bundled Ultra View software application, the administrator can easily change the configuration of the camera via Intranet or Internet. In addition, the camera can be upgraded remotely when a new firmware is available. The users are also allowed to monitor the image and take snapshots via the network.

---

### **✘ Motion detection**

The Motion Detection menu contains commands and options allowing you to enable and set up the motion detection feature of these cameras. You can enable two detecting areas within the camera view. Simply use the mouse to move the detection areas and change the area of coverage within the picture.



Setting Motion Detection areas in a camera view

---

## Quality Accessories, Added Functionality

### LCD Monitor and Video Receiver

Receives Video & Audio from up to 4 IP cameras and displays them as a quad or full screen image on its built in LCD monitor, without the need for a PC. Can be wall or desk mounted.



#### Order Code

LCD Monitor & Video Receiver for XIP3101 IP Cameras

**Model: IP3000M**

### Robust External Housing

This housing allows the cameras to be used externally. Heavy Duty durable design for extra protection. Supplied complete with wall bracket



#### Order Code

Weatherproof Housing and Wall Bracket

**Model: XIP3000H**

## Alternative Views



XIP3000-Front



XIP3001-Back



XIP3101-Side






Packaging



Package Contents

# Specifications

Model Number	XIP3000	XIP3001	XIP3101
Picture			
Designed for	Low Risk Applications	Low Risk Applications	Low Risk Applications
Weatherproof	<b>Yes (optional housing required)</b>	<b>Yes (optional housing required)</b>	<b>Yes (optional housing required)</b>
Picture Type	Colour	Colour	Day/Night (B/W & Colour)
Image Sensor	1/4" CMOS	1/4" CMOS	1/4" CMOS
Max. Resolution / Speed	640x480/25fps	640x480/25fps	640x480/25fps
Codecs	MJPEG	MJPEG	MJPEG/MPEG4
Lens Type (Angle)	3.6mm (60°)	3.6mm (60°)	3.6mm (60°)
CS Mount	No	No	No
Minimum Lux	1.0 lux	1.0 lux	0 lux (IR On)
Infra Red Nightvision Range	No	No	5 metres
Audio	<b>Yes</b>	<b>Yes</b>	<b>Yes</b>
Wired 10/100 Ethernet	<b>Yes</b>	<b>Yes</b>	<b>Yes</b>
Wireless 802.11g	No	<b>Yes</b>	<b>Yes</b>
Motion Detection	<b>Yes</b>	<b>Yes</b>	<b>Yes</b>
Alarms/Relays	No	No	No
3G Mobile Access	No	No	<b>Yes</b>
Pan/Tilt	No	No	No
Zoom	No	No	No
Operating Voltage	5V DC	5V DC	5V DC
POE 802.3af	No	No	No
Dimensions (WxHxD)	69x97x55mm	69x129x55mm	69x129x55mm
Warranty	1 Year	1 Year	1 Year

## Order Codes

Wired Entry Level IP Camera  
**Model: XIP3000**

Wireless Entry Level IP Camera  
**Model: XIP3001**

Wireless IP Camera with 3G Mobile Phone  
 & Apple OSX Support  
**Model: XIP3000**

[www.x-vision.co.uk](http://www.x-vision.co.uk)